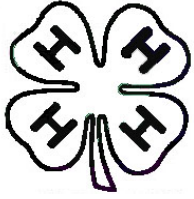




**2011-2012**

**CITRUS COUNTY FAIR  
POULTRY SKILL - A - THON  
STUDY GUIDE**



## Citrus County Poultry Skill-A-Thon

A "Skill-A-Thon" is an excellent method of involving FFA and 4-H members in challenging, learn-by-doing activities. This program of helping youth develop both their life skills and poultry project skills is designed as a series of mini-learning stations with a adult facilitator at each one. The participants rotate from station to station, attempting to perform specific tasks.

### OBJECTIVES:

1. To provide a learning laboratory which will enhance knowledge of the poultry industry.
  2. To help youth feel more comfortable communicating with an adult.
  3. To gain self-confidence and skills in one-on-one communication.
  4. To develop responsibility for completing a project.
  5. To develop critical thinking and problem-solving skills.
  6. To provide additional opportunities to recognize youth for their accomplishments.
- To have FUN!

### TOPICS:

The topics are required for each of the Fair's age groups for skill-a-thons.

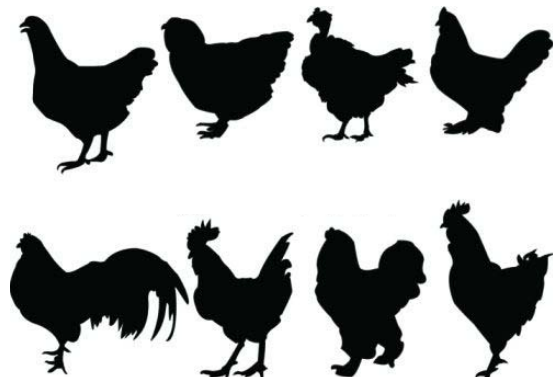
Age as of September 1<sup>st</sup>, 2011:

**J:** Junior ( 8-10 yrs)

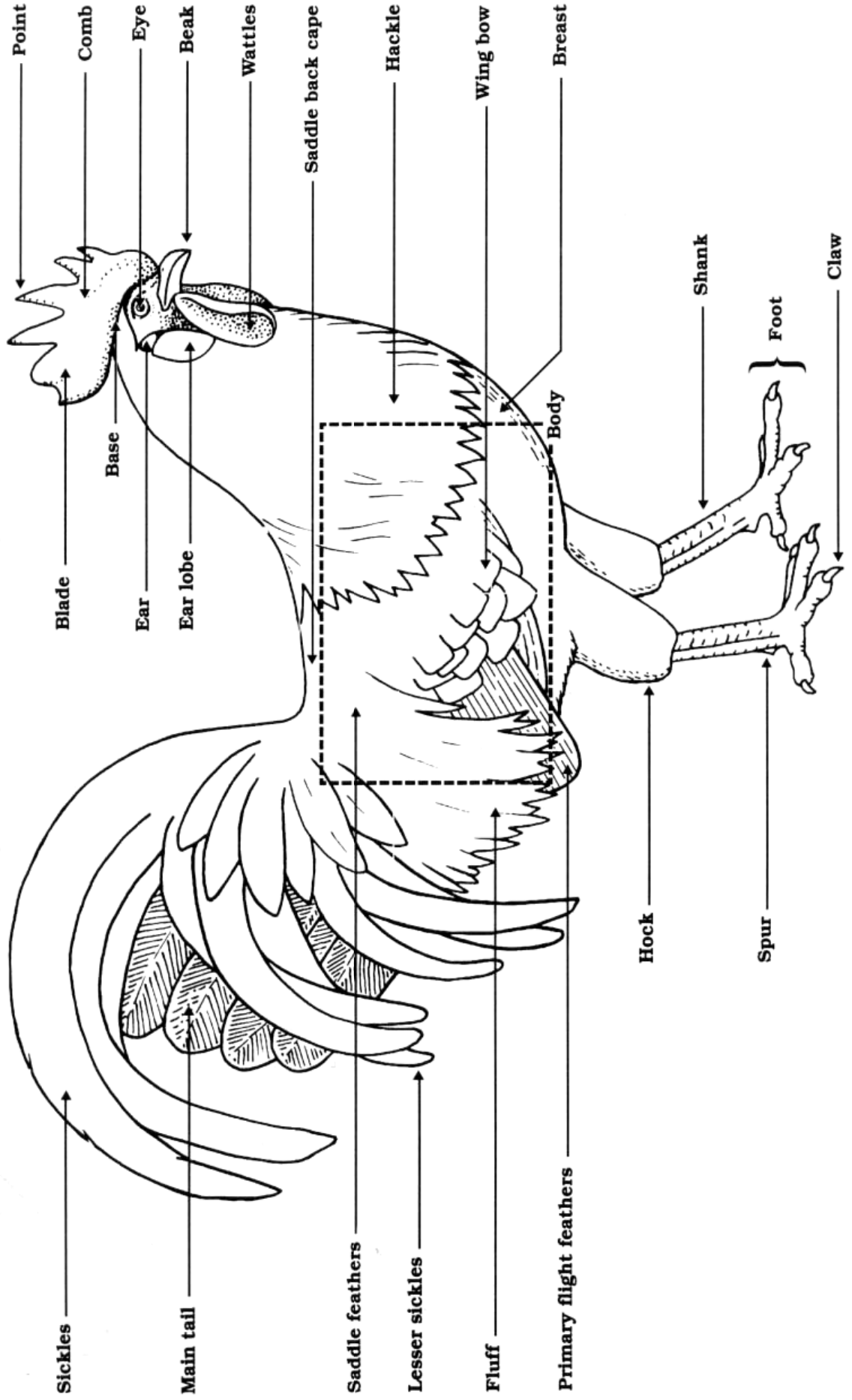
**I:** Intermediate (11-13 yrs)

**S:** Senior (14 yrs and up)

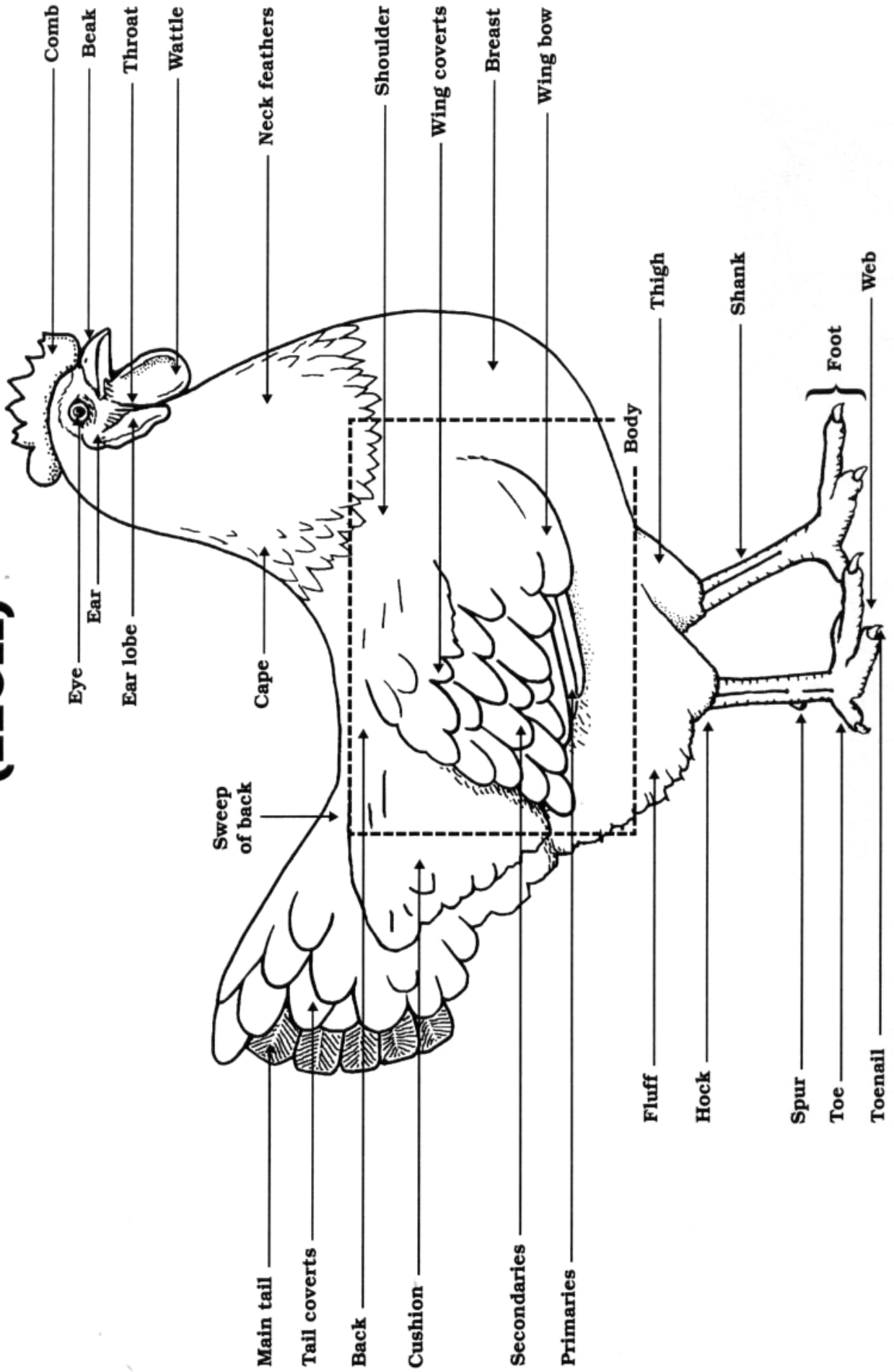
1. Parts of a Chicken
  - A. Learn the parts of a Cockerel
  - B. Learn the Parts of a Hen
2. Chicken Combs
3. Chicken Breed Identification (Large and Bantam)
4. Chicken Characteristics (Juniors will not be tested on these.)
  - A. Large Breed
  - B. Bantam Breeds
5. Meat Cuts of a Chicken
6. Inside an Egg
7. Poultry Showmanship Steps



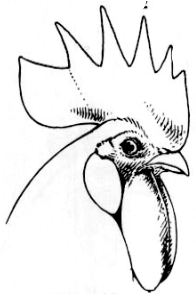
# Parts of a Chicken (Cockerel)



# Parts of a Chicken (Hen)



# Chicken Combs



## Single

A moderately thin, fleshy formation of smooth soft surface texture, firmly attached from the beak along the top of skull with a strong base, the top portion showing five or six rather deep serrations or distinct points, the middle points being higher than the front or back. The comb always erect and much larger and thicker in male than female; may be lopped or erect in female, depending on breed.



## Rose

A solid, broad, nearly flat on top, low fleshy comb, ending in a well developed spike, which may turn upward as in Hamburgs; is nearly horizontal as in Rose Comb Leghorns; or follow the contour of the head in Wyandottes. Top surface of the main part should be slightly convex and studded with small rounded protuberances. General shape varies in different breeds.



## Pea

A medium length, low comb, the top of which is marked with three low lengthwise ridges, the center one slightly higher than the outer ones, the top of which are either undulated or marked with small rounded serrations; a breed characteristic found in Ameraucanas, Brahmas, Buckeyes, Cornish, Cubalayas and Sumatras.



## Cushion

A low, compact comb of relatively small size, it should be quite smooth, possess no depressions or no spikes and not extend beyond the mid point of the skull.



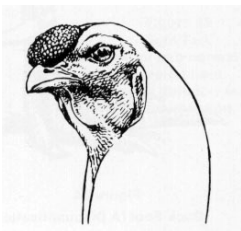
## Buttercup

Consists of a single blade arising at the juncture of the head and beak rising up to the cup shaped crown, set squarely on the center of the skull. The rim of the cup shall bear an evenly spaced circle of points and be closed at the back. Points emerging from the center of the cup are a serious defect



## V - Shaped

A comb formed of two well defined, hornlike sections joined at their base, as in Houdans, Polish, Crevecoeurs, La Fleche and Sultans.



## Strawberry

A low set, compact comb of somewhat egg or strawberry shape with the larger end near the beak and the rear extending no further than the midpoint of the skull.

# Chicken Breeds

**Key:**      **Breed**  
                 Variety  
                 Class - Large or Bantam



**Sussex**  
Speckled  
English - Large



**Orpington**  
Buff  
English - Large



**Brahma**  
Light  
Asiatic - Large



**Sicilian Buttercup**  
Mediterranean - Large



**Leghorn**  
Single Comb White  
Mediterranean - Large



**Rhode Island Red**  
Single Comb  
American - Large



**Old English Game**  
Black Breasted Red  
Game - Bantam



**Japanese**  
Black Tailed White  
Single Comb Clean Legged - Bantam



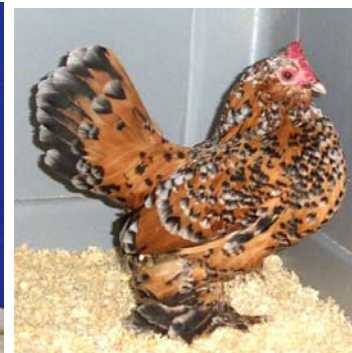
**New Hampshire**  
Single Comb Clean Legged - Bantam



**Silkie**  
Bearded White  
Feather Legged - Bantam



**Sebright**  
Silver  
Rose Comb Clean Legged - Bantam



**Booted**  
Bearded Mille Fleur  
Feather Legged - Bantam

# Chicken Breed Characteristics (Int. and Sr. only)

Chickens are divided into large chickens (also called large fowl) and Bantams. In addition to full size, or large chickens, poultry fanciers have developed a miniature counterpart of each large chicken called a Bantam. Bantams are normally one-fourth to one-fifth as large as their full-size counterparts, and in addition there are breeds that exist only as Bantams.

A "breed" is identified as having a particular body shape or style. Breeds are further divided into varieties, usually by differences in color or pattern of feather markings. In addition special features determine differences in varieties, such as comb shape or extra feathers such as a "beard" or "top-knot."

**Sussex** - Speckled - *English* - Large Fowl: This breed originated in England. Comb, wattles, and earlobes are bright red. Cock's comb is single, medium size, straight, and upright. Plumage is mahogany-bay and each feather is tipped in white with a black bar. Main tail feathers are black tipped in white. These are a good all-around farm-fowl: alert, attractive, good foragers, broody, and good mothers. They are one of the best dual purpose birds: used for meat production (about 7 to 9 lbs) and egg production (brown eggs.)

**Orpington** - Buff - *English* - Large Fowl: This breed originated in England. Comb, wattles and earlobes are bright red. Cock's comb is single, medium size, straight, and upright. Plumage is a rich, golden buff. These birds are docile, good mothers, broody, and able to withstand cold temperatures. They are general purpose birds: used for heavy meat production (8 to 10 lbs) and egg production (brown eggs.)

**Brahma** - Light - *Asiatic* - Large Fowl: This breed originated in China. Comb, wattles and earlobes are bright red. Cock's comb is pea shaped, small and firm. Shanks and toes are yellow with a black and white feather covering. Plumage is silvery white with a black and white cape. Main tail is solid black with increasing white towards the base of the tail. These birds are a favorite among fanciers for show. They go broody, are good mothers, and are able to withstand cold temperatures. They are general purpose birds: used for heavy meat production (9 to 12 lbs) and are fair layers (brown eggs).

**Sicilian Buttercup** - *Mediterranean* - Large Fowl: Breed originated in Sicily. Comb and wattles are bright red with white ear lobes. Cock's comb is cup-shaped, smooth and fine with a deep cavity. Plumage is reddish orange with a black tail and dark, buff cape with black spangles. Hen is golden buff with black spangles and tail. These birds are small, sprightly and non-broody. They lay a fair number of small eggs and are ornamental fowl (7 to 9 lbs) and large white eggs.

**Leghorn** - Single Comb White - *Mediterranean* - Large Fowl: This breed originated in Italy and is the most numerous breed in America today. Comb and wattles are bright red and the earlobes are white. Comb can be rose or single. Plumage is white with a large tail. These birds are small, sprightly, noisy and good foragers, capable of considerable flight, and like to move around. They are noted mostly for egg production (about 4 to 6 lbs, white eggs.)

**Rhode Island Red** - Single Comb - *American* - Large Fowl: This breed originated in Rhode Island, USA. Comb, wattles, and earlobes are bright red. Cock's comb is medium length, straight and upright. Plumage is rich, dark red with greenish black sickles in the tail. They are hard, dual-purpose birds, the best layers in the American group, and good for the small flock owner. Used for meat (6 to 8 lbs) and egg production (brown eggs.)

# Chicken Breed Characteristics

Continued  
(Int. and Sr. only)

**Old English Game** - Black Breasted Red - *game* - Bantam: This breed originated in England. Comb, wattles, and earlobes are bright red. Cock's comb and wattles are neatly dubbed. The head and neck plumage is orange red. The tail, wing fronts and coverts, breast and body are black. These birds are small, hardy, extremely active, very noisy, broody, aggressive, and capable of considerable flight. They are bred for show (22 to 24 ounces, white or lightly tinted eggs.)

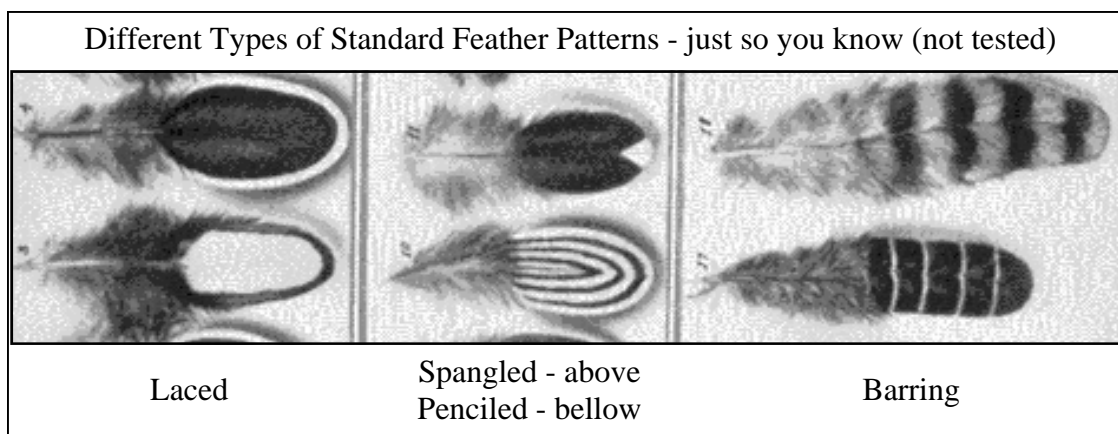
**Japanese** - Black Tailed White - *Single Comb Clean Legged* - Bantam: This breed originated in Japan. Comb, wattles, and earlobes are bright red. Cock's comb is single, large and firm. Wattles are large and smooth. Plumage is white with a greenish black. Sickles are black and laced in white. The birds weigh 22 to 26 ounces.

**New Hampshire** - *Single Comb Clean Legged* - Bantam: This breed originated in New England. Comb, wattles, and earlobes are bright red. Cock's comb is single, firm, medium length, and upright. Wattles are medium length, uniform, and free of folds. Plumage is chestnut red with a reddish bay head, golden bay neck, and black tail. These birds are competitive and aggressive. Hens go broody and make good mothers. They are meat chickens with fair laying ability (30 to 34 ounces, brown eggs.)

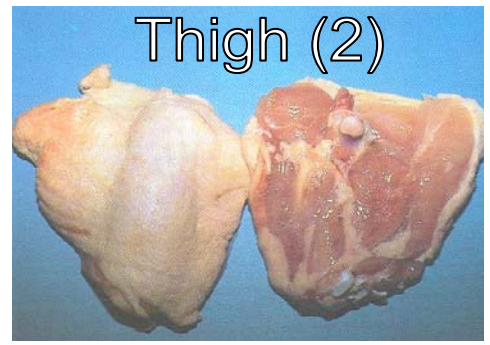
**Silkie** - Bearded White - *Feather Legged* - Bantam: This breed originated in the Far East. Comb and wattles are deep mulberry, and earlobes are light blue turquoise. Cock's comb is walnut shaped, moderately small, lumpy and almost round. Crest is medium size, soft, and full. Wattles are very small; natural absence is preferred. Shanks and toes (five toes) are leaden blue and well covered with feathers. Plumage is white, downy or silky and hair like (feathers are without webs.) Beard is thick and well feathered. (weight 32 to 36 ounces.)

**Sebright** - Silver - *Rose Comb Clean Legged* - Bantam: This breed originated in England. Comb and earlobes are purplish red, and wattles are bright red. Cock's comb is rose shaped, firm, and square in front. Wattles are broad and well rounded. Plumage is silver-white edged in black. Tail does not have sickles. Birds are bred for show and make good layers. (22 to 26 ounces.)

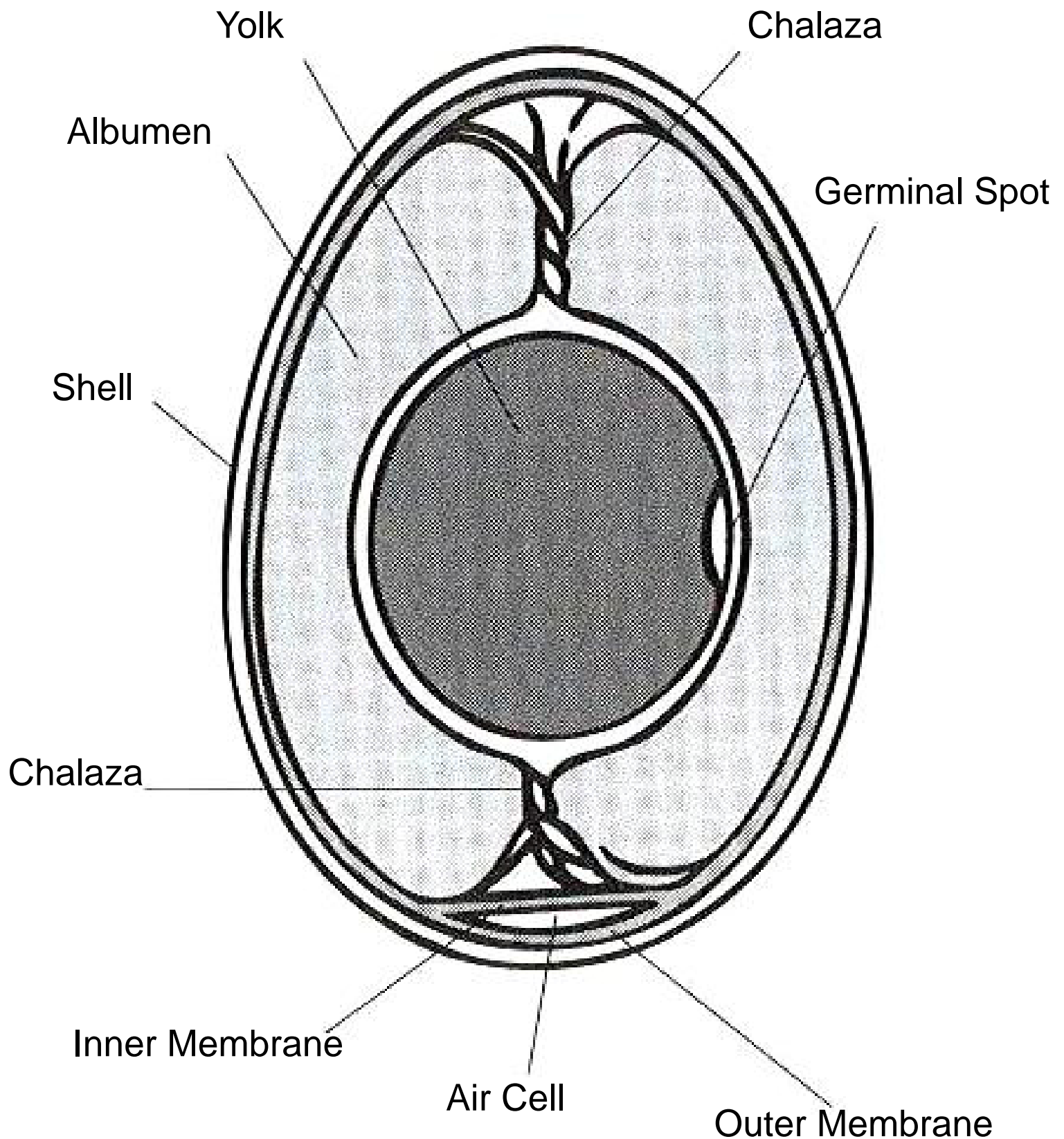
**Booted** - Bearded Mille Fleur - *Feather Legged* - Bantam: This breed originated in Germany. Comb, wattles, and earlobes are bright red. Cock's comb is single, medium size, firm, and straight on head. Wattles are very small; natural absence is preferred. Shanks and toes are slate blue with a black feather covering tipped in white. Plumage is bright red with a white spangle on the end of each feather and separated by a black bar. Tail feathers are black with a white spangle at the end. Beard and muff are thick and full, with a mane-like appearance. (weight 22-26 ounces.)



# Meat Cuts of a Chicken



# Inside an Egg



# Poultry Showmanship Steps

<b>Procedure</b>	<b>How it is done</b>	<b>Reason</b>
1) Remove the bird from coop	Always remove bird head first with one hand over the back, and the other under the body, with your fingers around the legs.	This prevents the bird from struggling to get away and overly excited.
2) Pick up and hold the bird. (Remain standing at attention until the judge releases you.)	Pick up your bird by spreading your fingers and placing your hand, palm up under the bird's breast as it faces you. As your palm touches the breast, you will find the legs will be placed between your fingers. As you lift the bird, gently grasp the legs by closing your fingers.	This makes the bird feel at ease. It isn't so likely to struggle and it is more easy to handle.
3) The judge will ask you to pose the bird on the show table.	Place the bird on the table and set up the bird's legs straight. You should take a step back and stand at attention.	Your bird should not move, walk or fly away. If it moves both legs, you can pick it up and set it back down, but don't re-pose legs.
4) Examination section follows the posing. When instructed start with the birds head.	Hold the bird alert and point at eyes, look and touch comb, feel wattles, examine beak, and point to ears.	You are noting the eyes, comb, wattles, shape of head, beak and ears; and any defects present.
5) Examine wings. <i>(Different guides have multiple ways of doing this step and the following ones. You may choose another order, but be sure to include each area of the bird.)</i>	Open left wing and check the primary and secondary feathers for signs of molting. Take a closer look at the skin on the inside for mites. Repeat steps for right wing.	You are noting the color, absence of feathers, slipped wings, split wings and twisted feathers.
6) Examine the body plumage	Run your fingers over the neck, back and breast area to feel for smoothness.	Note the color and quality of feathers. Look for the presence of lice.
7) Examine the tail	Run your hand down the tail. Press the tail feathers toward you. You may count the feathers.	You are looking for color and feather quality and determining any sign of molting.
8) Examine shanks and feet	Place free hand on back of bird and turn upside down. Look at the color on front and back of shanks and feet, counting each toe.	You are noting color, cleanliness, and for defects. Look at the feet of a hen for pigment loss.
9) Examine body	While still holding bird upside down, in the palm of hand, note width of body, check abdomen, and vent area.	You are measuring a hen's egg production, amount of meat present on the bird, and for signs of parasites.
10) Return the bird to the upright position and hand to the judge.	You always do this head first.	The judge will check and verify the points they are interested in.